

THE LEAFLET



December 2010

A PUBLICATION BY THE ROBERTSON COUNTY MASTER GARDENERS

2010: A GOOD YEAR FOR ROBERTSON COUNTY MASTER GARDENERS

By Lynn Stenglein

Compiling our year-end “2010 RCMG Christmas Letter” presentation for our December meeting was a “no brainer”. While showcasing our year, I found plenty of drama, comedy, and (near) tragedy depicted in colorful pictures of the plant sale and garden walk, of the Animal Shelter landscape, of the bird sanctuary, of field trips, classes, gardens, and other projects. We can be grateful for and proud of several other, perhaps less picturesque but significant accomplishments:

- Educational and fun presentations on bee keeping, composting, container planting, butterflies, and worm farming for our M.G. group, our visitors and the community.
- A financial plan/budget document that will expedite project financing, improve the accountability process and institute a process for special county beautification projects.
- Improved communication not only through our newsletter and web site (including those who contributed photos) but also from the advisory committee to the officers, our Project Advisor for Master Gardener projects and our mentoring program.
- Contributions in our projects from outside sources; flowers from South Central Growers—we just had to ask; generous mulch terms from Brown Nurseries for the Animal Shelter, hours and hours of work and expense by the seven garden owners in our May Garden Walk, resource contributions by M.G. in projects in plants and mulch—Volunteer “unheralded” hours; providing meeting refreshments, setting up/cleaning up our meeting room, serving on administration M.G. committees and offices, recruiting new M.G. interns, and many, many more.

**Master Gardener Meeting:
Thurs., Jan. 27th, 7:00 p.m.
at Extension Office
Program:
WILD BIRDS
Presented by:
ROY JENSEN**

Thanks to all for the 2010 volunteer work!
(over 1400 hours reported in 2010—let’s go for 2011 hours in 11’)

MENTORING PROGRAM BEGINS: IT’S A MATCH!

By Lynn Stenglein

Eleven interns from the 2010 class responded to the mentoring survey and have been assigned a Master Gardener mentor. Mentoring activities, including consulting, learning about the Master Gardener programs and projects, exchange of any gardening information, count as volunteer hours. A category on the Master Gardener website has been set up for this purpose. It is never too late or too early to start reporting entering your volunteer hours.



Discussion and election of 2011 RCMG Officers will occur in our January meeting.

FACT: Mistletoe is the “shrub of the heavens,” a parasite that lives on the branches of trees.



**UT Extension – Robertson
County
Centennial Celebration
Open House
Thursday December 16th,
10:00 am – 1:00 pm
408 North Main Street,
Springfield**

**2010 marks a century of
Tennessee Extension and 4-H
in Tennessee. Join us to
celebrate 100 years of
educational service to the
state’s farmers, families, and
youth.**

2011 CLASS MASTER GARDENER INTERNS



We can't wait to meet and greet our new club members. Included in the 2011 class of Master Gardener Interns are Kelly Gary, Van Tucker, Bridgette Wakefield, Cordell Short, Brittany Belcher, Walker "Pepper" Ashford, Paul Putman, Vivian White, Connie Christopher, Glenda and Jim Littie, Stephanie Rollins, Troy Bryan, Lisa Parker, and Rose Parker.

10 Things I Wish I'd Learned Before I Began Gardening...

- Yes, they will get bigger.
- If one is good, six may not be better.
- If the label says "aggressive", you've been warned.
- Roses are red, and brown and spotted and buggy.
- Keep it simple.
- Start small.
- Befriend an expert.
- Admit mistakes and move on.
- Don't be afraid to cull.
- Relax, it's just a garden!

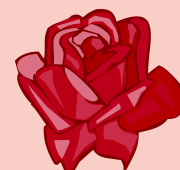
RON DANIEL HAS SOLUTION FOR ROSES

Ron Daniels, rosarian and Sumner County Master Gardener, educated our Robertson County club on locating, selecting, feeding, and protecting roses at our October meeting. In addition getting information on roses and "catching" some of Ron's enthusiasm for growing roses, all of us came away from the meeting with rose bushes and/or cut flowers.

Ron shared this recipe which he uses for his cut flower arrangements:

- 1 Quart water
- 2 Tablespoons lemon juice
- 1 Tablespoon sugar
- ½ Teaspoon bleach

Mix well. Solution will last up to one month in the refrigerator.



Is it Safe to Compost Coffee Filters? Most white coffee filters are bleached, according to the Colorado State Extension. This means they likely contain synthetic chemicals. Those attempting to maintain an organic garden need to consider this before tossing them in the pile.

New UT Publications

By Paul Hart

Rob. Co. Extension Agent

Several new Weed Control publications have recently been added to the UT website. These would be good additions to your Master Gardener Handbook. *Common Herbicides for Ornamental Weed Control* (W245) and *Common Herbicides for Fruit & Vegetable Weed Control* (W244) can be found on the UT Extension website: <http://utextension.tennessee.edu> under the publications link. Products are categorized as burndown, preemergence, postemergence, and postemergence/selective treatments. These publications, also list labeled uses, weeds controlled, timing of application and application rates for herbicides for home gardeners. The Fruit & Vegetable publication also includes a list of "Organic Burndown" treatments.

Another publication on *Brush Control in Urban Landscapes* (W242) provides information on controlling woody plants and vines that often plague homeowners.

If you haven't looked through the UT Extension publications on-line recently I would encourage you to put that on a winter "to-do list". There are numerous new additions including an 14 page leaflet on pruning ornamental plants complete with diagrams, photos, and list of pruning techniques.

Remember to enter all of your remaining volunteer hours before year end. In January the totals will roll back to ZERO. Even meetings count so enter EVERYTHING! Let's get our group hours as high as we possibly can. We have worked hard!

TEX MEX LAYERED SALAD

from Catey Henning

Layer each of these ingredients in a clear trifle bowl for effect or just whatever bowl you happen to have around! It still tastes great!

1 can black beans, drained and rinsed
1 1/2 cups shredded mild cheddar cheese
1 12 oz. jar salsa (I use mild)
1 tomato chopped
1/2 red onion, chopped small
1 small can sliced black olives
1/2 or 1 small red bell pepper, chopped
1/2 cup chopped fresh cilantro
1 1/2 cups shredded monterey jack cheese
1 entire head chopped Romaine lettuce

Dressing:

1 cup sour cream
1/2 cup chopped cilantro
3 cloves of fresh garlic
1 teaspoon honey
zest of 1 lime
juice of one lime
1/2 teaspoon chili powder
1/2 fresh avocado
1/2 cup EVOO - Extra virgin olive oil



Enjoyed at the Dec.
M.G. Party!

Put all dressing ingredients in blender and puree well. Pour over the top of the entire salad. Serve with some chips or cornbread! YUM!

CONTACT LIST

President, Lynn Stenglein, 859-9659, lcsqts@hughes.net

Vice President, Doug Buck, historybug52@yahoo.com

Secretary, Michelle Adcock, shelladcock@yahoo.com

Treasurer, Judy Bryant, jbryant2@utk.edu

The Leaflet:

ccd3160@comcast.net / Michelle Adcock, shelladcock@yahoo.com / Mary Adkins, maryphotog1@aol.com

Robertson Co. Extension Agent

Paul Hart, 384-7936, pehart@utk.edu

RCMGA Web Site: rcmga.org